

*Get an accurate and
precise reflection of
intraoral conditions*



miniCAM

Intraoral Camera

PX-520

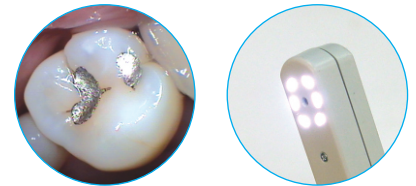
MONITEX

maniCAM PX-520

Intraoral Camera

PX-520 is one of the most high-functioning intraoral cameras on the market, with both wired and wireless options, allowing users the flexibility to choose the system best suited to their clinical layout. The intraoral camera utilizes high resolution Sony CCD image sensors to capture clear images that can be saved onto a computer, and can be linked via VIDEO, VGA, S-VIDEO, or USB cables to a monitor. If using the wireless option, enjoy untethered movement up to 5 meters from the docking station.

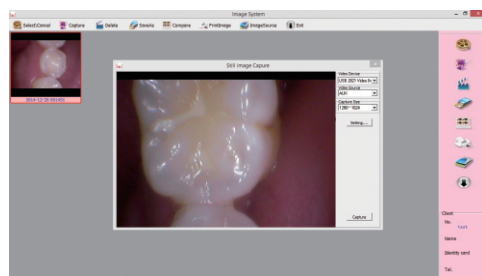
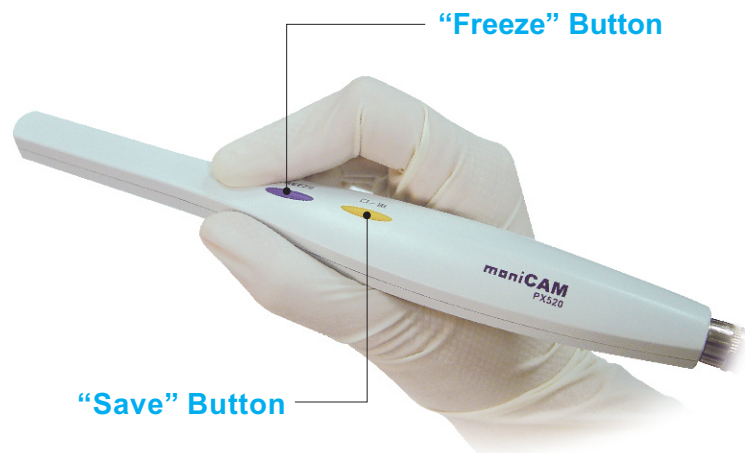
- Capture full screen or quadrant images.
- Uses high resolution Sony Super HAD color 1/4" CCD image sensor.
- Wired and wireless options.
- Wireless option has 4 channels of signal transmission.



Wireless Receiver



Wireless Transmitter
4 Wireless Channels



Specifications:

Intraoral Camera

- Resolution 430,000 pixels
- Image Sensor Sony Super HAD color 1/4" CCD
- White Balance Auto
- Focal Length 4 mm ~ 35 mm
- Light Source 6 White LED
- Dimensions 210(L) x 19(W) x 10(H) mm
- Weight 37 g

Docking Station

- Image Output USB, VGA, Video, S-Video
- Video System NTSC / PAL
- Memory 28 full images or 112 quadrant images
- Power Input AC 100~240V, 50/60 Hz
- Power Output DC5V = 2A
- Dimensions 193(L) x 98(W) x 51(H) mm
- Weight 278 g



MONITEX INDUSTRIAL CO., LTD

5F, 70, Sec. 1, Guangfu Rd., Sanchong Dist., New Taipei City 24158, TAIWAN
 TEL: + 886 2 29993869 FAX: + 886 2 29993647
 Email: monitex@monitex.com.tw
www.monitex.com.tw

