



BR-350

Kerenna WhitenMAX BR-350 The Most Compact Teeth whitening unit

WhitenMAX combines LED polymerization, light activation, and color-correction technologies. More safe, fast and easy for use. WhitenMAX is not only used by dental profession, but also by beauty spas and salons with properly trained personnels.

Kerenna WhitenMAX BR-800 Professional Teeth Whitening unit

The latest LED technology with tooth whitening accelerator. Combined with 4 Blue & 1 Red LED lights emission, wider spectrum of accelerating efficiency can be offered, giving teeth whitening more care and better result. The innovative tooth whitening system offers the most comfortable and effective treatment all the time.



BR-800

Beauty:
16
percent

Kerenna Professional Tooth Whitening Gel

Carbamide peroxide **16%**
Impressive your smile impressive your white



Kerenna white 16% Tooth Whitening Gel : Beauty is professionally initiated in the beauty spa or salon with light cure activation. Interactive patient compliance programs increase patient satisfaction with the effective results for tooth color correction and teeth whitening in minimize sensitivity.



Instructions:

1. Make sure the tooth surface is dry and the Cheek Retractor is positioned.
2. Use the Tooth Whitening Gel to complete cover each tooth with enough thickness.
3. Use the light cure to start the tooth whitening program.
4. Complete the tooth whitening program, please rinse your tooth.



Desensitizing Cream



Kerenna white Desensitizing Cream contains neutral sodium-fluoride gel. Relieves tooth sensitivity caused by chemical and thermal changes after whitening treatment. It creates a sealed layer when properly applied on the etched dentin tubes. Fluoride releasing to minimize postoperative sensitivity, it's also prescribed as a supplemental oral-care regimen for patients following cosmetic bleaching procedures. Can be used in-office or provided to the patient for at-home treatment for preventive. Very easy to use and it works for pain relief in few minutes.



Instructions:

1. After the tooth whitening program, apply to the Kerenna white Desensitizing Cream on the tooth directly.
2. Wait few minutes for eliminating post operative sensitivity.
3. Rinse mouth with clean water.



MONITEX Industrial CO., LTD

6F., No.70, Sec. 1, Guangfu Rd., Sancong Dist.,
New Taipei City 241, Taiwan

www.kerenna.com



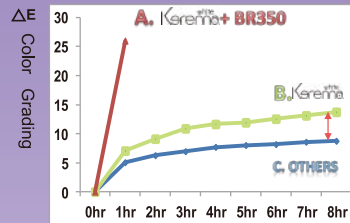
0hr → 1hrs



0hr → 8hrs



0hr → 8hrs



Test method:

- Use the light accelerator WhitenMAX BR-350 whitening machine.
- Does not use any light accelerators. Under observation for 8 hours, recorded and observed once every hour.
- Wear the bleaching tray with the whitening gel, as same as daily routine use of instruction.

Whitening effect:

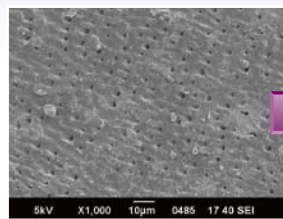
ΔE, the higher difference of the color grades changed means the whitening effect is more significant.

Clinical Evidence:

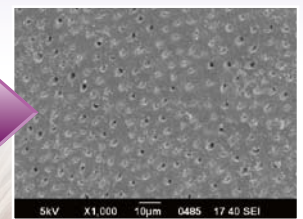
- ✓ Clinically tested by dentists trial use and compared with the other brands in the market to prove Kerenna has superior characteristics in lower sensitivity, more convenient operation and better performance.

Test results:

- ✓ Are non-toxicity, approved by cell-biologically non-toxic test.
- ✓ Effectively reduce tooth sensitivity with no side effects, approved by the physician clinical trials of use.



Before



After

